

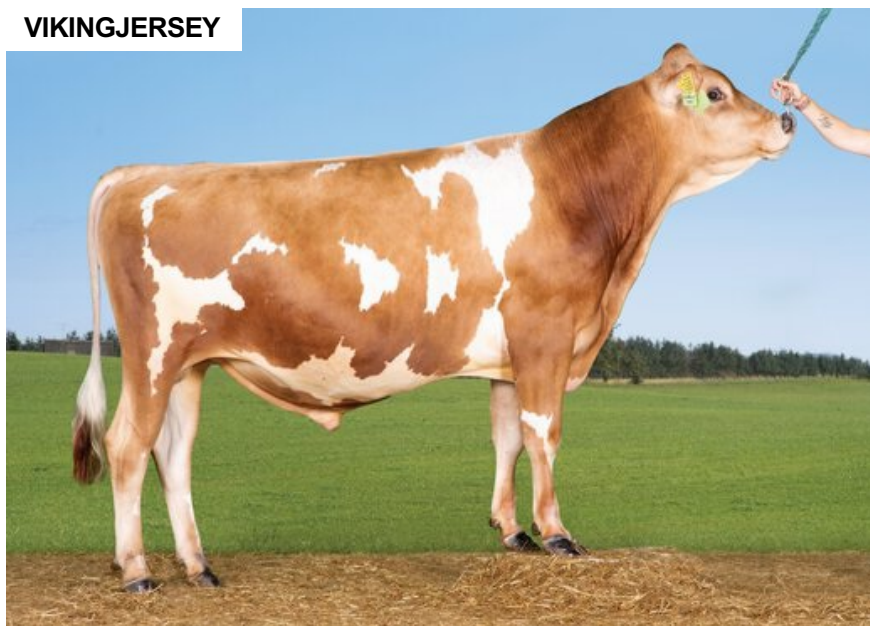
# VJ Luxplus

DNK 305013

Beta casein: A2A2    Kappa casein: BB    aAa: 561  
 DOB.: 21/05/2020    VJ Luxi x VJ Samson x VJ Link  
 Proven                      Polled: POF



## VIKINGJERSEY



## NTM 13

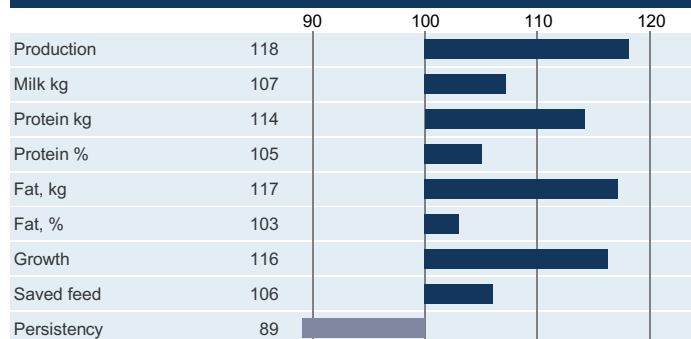
RECOMMENDED FOR

- MILK
- CALVING EASE

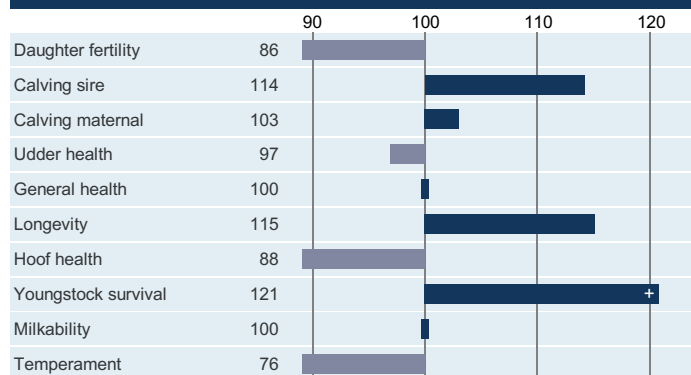
Dam average (305 days) 14394 Lbs 6.1 % F / 877 Lbs F 4.38 % P / 631 Lbs P  
 Est. dtr. average (305 days) 17699 Lbs 6.07 % F / 1067 Lbs F 4.43 % P / 780 Lbs P

### NTM May 2026

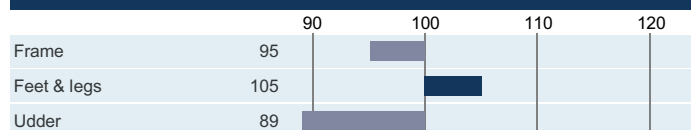
#### PRODUCTION & EFFICIENCY NO. OF DTRS 2290 REL 99%



#### FUNCTIONAL NO. OF DTRS 1894 REL 97%



#### OVERALL CONFORMATION NO. OF DTRS 849 REL 93%



#### CONFORMATION

