

# VH Bernell

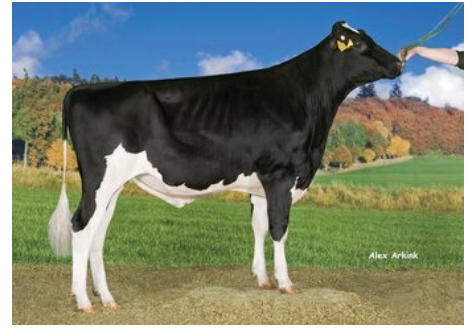
DNK 257379

Beta casein: A2A2  
DOB.: 18/03/2014  
Proven

Kappa casein: BB aAa: 432  
Bube x VH Salomon x Mascol



## IMPORT



## NTM 14

### RECOMMENDED FOR

- MILK
- CALVING EASE
- HOOF HEALTH
- PROCROSS LIQUID

Daughter of VH Bernell

**Dam average (305 days)** 25655 Lbs 4.43 % F / 1138 Lbs F 3.66 % P / 939 Lbs P  
**Est. dtr. average (305 days)** 26791 Lbs 4.04 % F / 1076 Lbs F 3.51 % P / 939 Lbs P

### NTM May 2026

#### PRODUCTION & EFFICIENCY NO. OF DTRS 5928 REL 99%

		90	100	110	120
Production	104				
Milk kg	112				
Protein kg	110				
Protein %	94				
Fat, kg	101				
Fat, %	91				
Growth	106				
Saved feed	114				
Persistency	110				

#### FUNCTIONAL NO. OF DTRS 5786 REL 99%

		90	100	110	120
Daughter fertility	99				
Calving sire	105				
Calving maternal	106				
Udder health	104				
General health	102				
Longevity	111				
Hoof health	114				
Youngstock survival	114				
Milkability	87				
Temperament	99				

#### OVERALL CONFORMATION NO. OF DTRS 2478 REL 99%

		90	100	110	120
Frame	99				
Feet & legs	110				
Udder	96				

#### CONFORMATION

		80	90	100	110	120		
Stature	Short						Tall	97
Rib structure	Coarse						Angular	103
Chest width	Narrow						Wide	95
Body depth	Shallow						Deep	93
Rump width	Narrow pins						Wide pins	113
Rump angle	High pins						Low pins	110
Top line	Weak						Strong	98
Rear legs, side view	Straight						Sickled	113
Rear legs, rear view	Toes out						Parallel	113
Foot angle	Low						Steep	82
Bone quality	Coarse						Fine and thin	109
Hock quality	Filled						Dry	112
Fore udder att.	Loose						Strong	101
Rear udder height	Low						High	104
Rear udder width	Narrow						Wide	96
Udder support	Weak						Strong	94
Udder depth	Deep						High	103
Udder balance	Deep rear						Deep front	94
Teat length	Short						Long	86
Teat thickness	Thin						Thick	95
Teat placement (front)	Wide						Close	105
Teat placement (back)	Wide						Close	105