

Praser

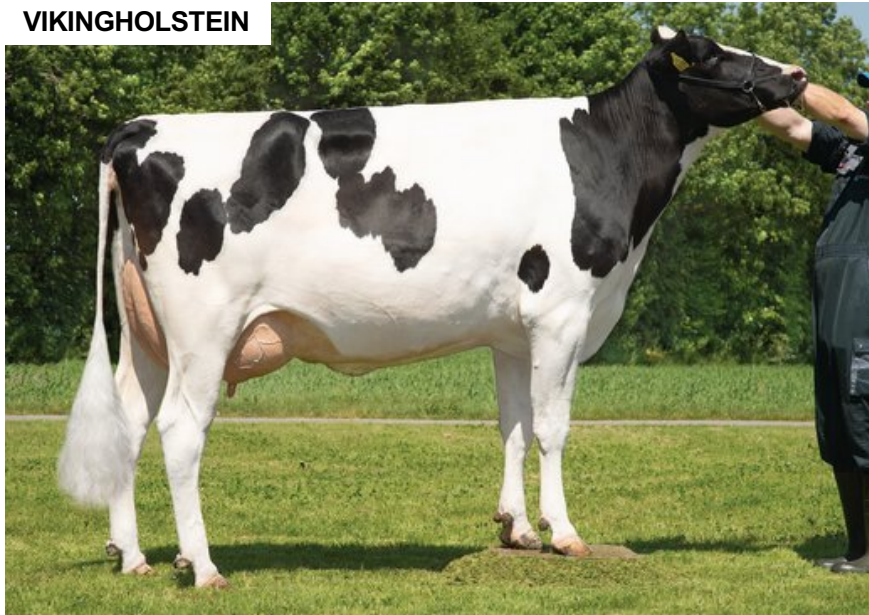
CAN 12283345

Beta casein: A1A2
DOB.: 27/12/2015
Proven

Kappa casein: AB aAa: 324156
Penmanship x Bay MVP x Epic
Polled: POF



VIKINGHOLSTEIN



NTM -1

RECOMMENDED FOR

• SOLIDS

Daughter of Praser

Dam average (305 days) Data not available
Est. dtr. average (305 days) 25560 Lbs 4.33 % F / 1087 Lbs F 3.65 % P / 924 Lbs P

NTM May 2026

PRODUCTION & EFFICIENCY NO. OF DTRS 3408 REL 99%

		90	100	110	120
Production	106				
Milk kg	95				
Protein kg	103				
Protein %	113				
Fat, kg	105				
Fat, %	109				
Growth	109				
Saved feed					
Persistency	89				

FUNCTIONAL NO. OF DTRS 3469 REL 99%

		90	100	110	120
Daughter fertility	101				
Calving sire	107				
Calving maternal	97				
Udder health	94				
General health	100				
Longevity	89				
Hoof health	88				
Youngstock survival	106				
Milkability	93				
Temperament	96				

OVERALL CONFORMATION NO. OF DTRS 1346 REL 97%

		90	100	110	120
Frame	110				
Feet & legs	103				
Udder	91				

CONFORMATION

		80	90	100	110	120		
Stature	Short						Tall	103
Rib structure	Coarse						Angular	104
Chest width	Narrow						Wide	105
Body depth	Shallow						Deep	111
Rump width	Narrow pins						Wide pins	109
Rump angle	High pins						Low pins	105
Top line	Weak						Strong	101
Rear legs, side view	Straight						Sickled	100
Rear legs, rear view	Toes out						Parallel	99
Foot angle	Low						Steep	99
Bone quality	Coarse						Fine and thin	105
Hock quality	Filled						Dry	107
Fore udder att.	Loose						Strong	95
Rear udder height	Low						High	93
Rear udder width	Narrow						Wide	98
Udder support	Weak						Strong	104
Udder depth	Deep						High	88
Udder balance	Deep rear						Deep front	92
Teat length	Short						Long	106
Teat thickness	Thin						Thick	123
Teat placement (front)	Wide						Close	105
Teat placement (back)	Wide						Close	104